

# Silent **b**

A silent **b** comes  
after the letter **m**.

**bomb**



**thumb**

**lamb**



## Silence Please! (Silent Letters)

A1 – A2

Module 7

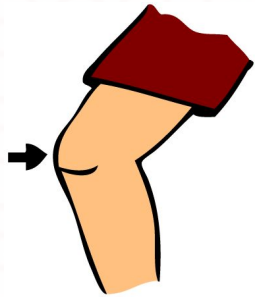
Here's What We  
Will Be Learning  
in this  
Presentation:



# Summary

- Let us learn what are silent letters.
- Some silent letters.
- Exercises.

**Silent Letters** are those letters in a word which are not pronounced.



Like: **K**nee = silent "k"

Lamb**b** = silent "b"

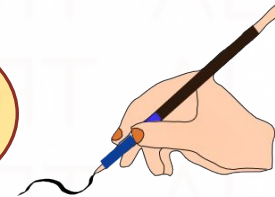


# Silent Letter "W"

**W**rong



**W**rite



**W**rist



**W**o



# Silent Letter "L"

Talk



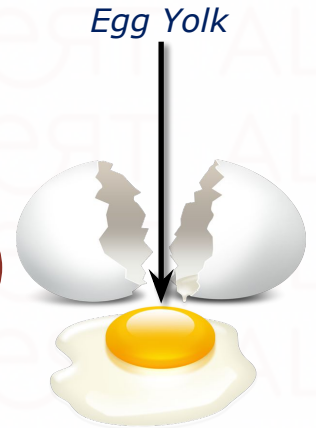
Half

$\frac{1}{2}$

Walk



Yolk



# Exercise 1:

Find the silent letters in the following words:

Wrong

Lamb

Write

Wrist

Knee

Yolk

Two

Talk

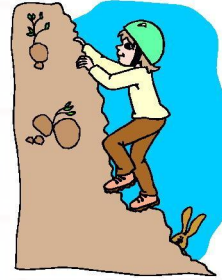
Walk

# Silent Letter "B"

Comb



Climb



Thumb



*Thumb*

Plumber



# Silent Letter "H"

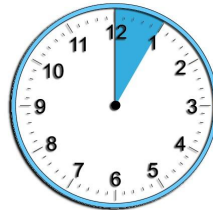
School



Night



Hour



Ghost





# Silent Letter "U"

Guitar



Tongue



Question



Biscuit



# Exercise 2:

Tell the trainer if the silent letters are correct or not:

N**igh**t

Th**u**mb

Gu**it**ar

Plu**m**ber

Cl**im**b

Qu**est**ion

**Comb**

**Ghost**

**School**

**Biscuit**

**Hour**

**Tongue**

# Exercise 3:

Read the words and say which letter is silent:

Wrong

Hour

Guest

Salmon

What

Lamb